

ASSEMBLY INSTRUCTIONS

STEP 1: Install castors using 4 x M10 nut and bolts (ea.)

STEP 2: Insert front & rear trusses into Left & Right side rails

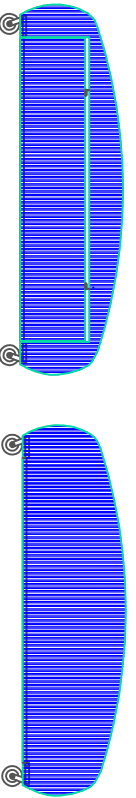
STEP 3: Fasten bottom of rear truss into side rails using 2 x M14 nut & bolts

STEP 4: Insert inside frames into side rails (x4)

STEP 5: Insert door rails between the front and first truss, hang door and insert stop (see layout and detail)

STEP 6: Attach sheeting using 180 x Tec screws

NOTE: All hardware supplied



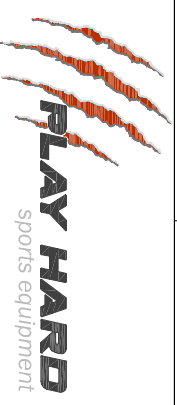
COLORBOND CORRUGATED SHEETING OCEAN BLUE

9 X 7050 MM

2 X 4890 MM

2 X 4650 MM

(240 TEC SCREWS)

<p>TITLE: THJ30 ASSEMBLY</p>	
<p>DRAWING NUMBER: THJ30 ASSEMBLY</p>	
<p>WEIGHT: -</p>	<p>DATE: 12/02/2015</p>
 <p>PLAY HARD sports equipment</p>	
<p>Oz Ring Pty Ltd Trading as: Play Hard Sports Equipment ABN 79 066 094 559 24 Ern Harley Drive Burliegh Heads Qld 4220 Phone: (07) 5593 4494 Fax: (07) 5593 4338</p>	
<p>Website: www.playhardsports.com.au Email: email@playhardsports.com.au</p>	